



Ultracera® Surfaces

Web: www.ultracerasurfaces.com Email: sales@ultracerasurfaces.com



Ultracera®
Surfaces

Zero Crystalline Silica Surfaces
Manufacturer

ULTRACERA ADVANTAGES NEW MATERIAL

New Material

Beneficial to people

Crystalline silica free, Pigments, Worker safety



Beneficial to environment

Porcelain-based Material, Water Recycling, Solar Energy, Odorless Air—Ecological Efficiency



Beneficial to use

Stain Resistant, Scratch Resistant, 6+ years mature product time

- | | | |
|------------------------|--------------------|-------------------|
| Stain Resistant | Scratch Resistant | Impact Resistant |
| Hardness 6.0+ | Chemical Resistant | Easy Cleaning |
| Gloss | Waterproof | Water Recycling |
| Environmental Friendly | Chromatic | 15 Years Warranty |

Zero Crystalline Silica Innovation with US. Patent Granted.



CRYSTALLINE SILICA FREE REVOLUTIONARY

Ultracera's exceptional design surpasses quartz in multiple significant aspects, firmly establishing it as the ultimate choice in the market.

It stands out as the only alternative completely free from crystalline silica, a crucial feature given the potential hazards associated with silicosis.

Note: the slab may contain <1% trace level crystalline silica contaminations.



REVOLUTIONIZING SURFACES WITH PORCELAIN-BASED MATERIAL INNOVATION

Porcelain-based material Advancements Redefining Surfaces Worldwide

PATENTED ULTRACERA

Replace the crystallize silica quartz powder with the refined Porcelain-based material and use the mature quartz processing technology. This material has received invention patents in the U.S.A.

PROVEN TECHNIQUES

Product processing uses available machine equipment for edge work. The production process relies on mature and established quartz procedures, ensuring high-quality product standards.



PATENTED ULTRACERA PLUS

One of the key factors contributing to our success lies in our cutting-edge UV-resistant technology, achieved by incorporating customized resins into our porcelain-based material. This technological innovation has significantly reduced color change and notably enhanced the durability of our worktops. Ultracera's products enjoy significant demand for various outdoor applications, including outdoor kitchen tops, wall facades, and outdoor tables.



At Ultracera®, we subject our outdoor products to rigorous testing to ensure they can endure extreme temperature fluctuations. We meticulously engineer these products to withstand temperatures ranging from -30°C (-22°F) to 60°C (140°F), making them exceptionally reliable in a wide range of climates.

3000+ Hours UV Lab Test

REDEFINING VALUE & QUALITY IN THE MARKET



Cost Effective

High cost-performance ratio is the main attraction of our products to consumers.

Safer

Our products are Zero Crystalline Silica and styrene-free, harmless to workers. Worker-friendly products.

Sustainable

Porcelain-based material is abundantly available, offering a sustainable material that is also economical and marketable.

Flexible

Our slabs are more flexible, customizable, and versatile.

Indoor Applications

- Bathroom Vanity Tops
- Kitchen & Kithchen Island Tops (Countertops, Benchtops, Worktops)
- Furniture Tops
- Bar Tops
- Commercial worktops
- Decorative wall splashes

Outdoor Applications

- Outdoor Kitchen Tops (Countertops, Benchtops, Worktops)
- Outdoor Furniture Tops
- Outdoor Bar Tops
- Outdoor Wall Facades

Properties

 Stain Resistant	 Scratch Resistant	 Impact Resistant	 Hardness 6.0+	 Chemical Resistant
 Easy Cleaning	 Gloss	 Waterproof	 Water Recycling	 Environmental Friendly

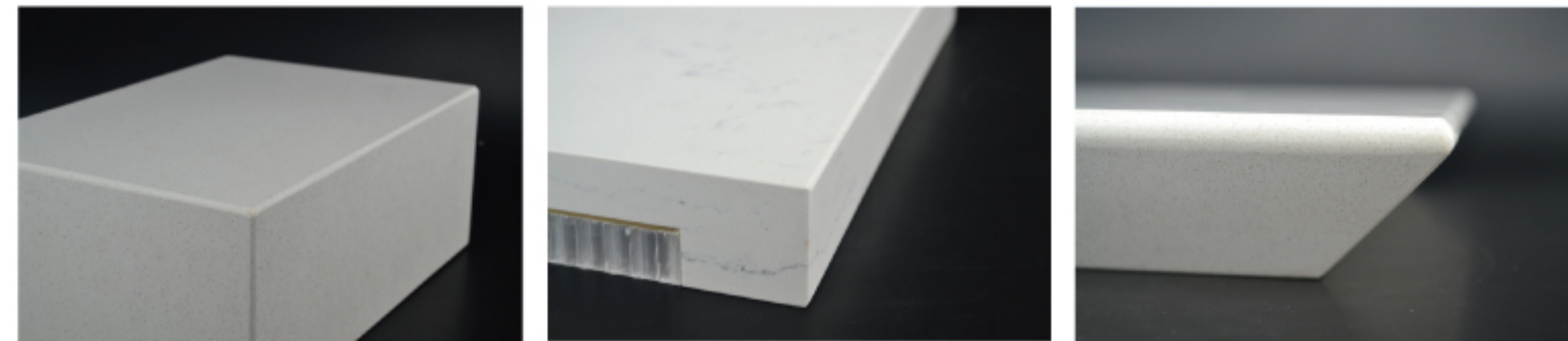
Properties Plus + (Outdoors)

 UV Resistant	 Snow Resistant -30°C	 Heat Resistant 60°C	 Sunshine Resistant	 Wind Erosion Resistant
---	---	--	---	---

Finish

Polished Semi-polished Honed Leathered

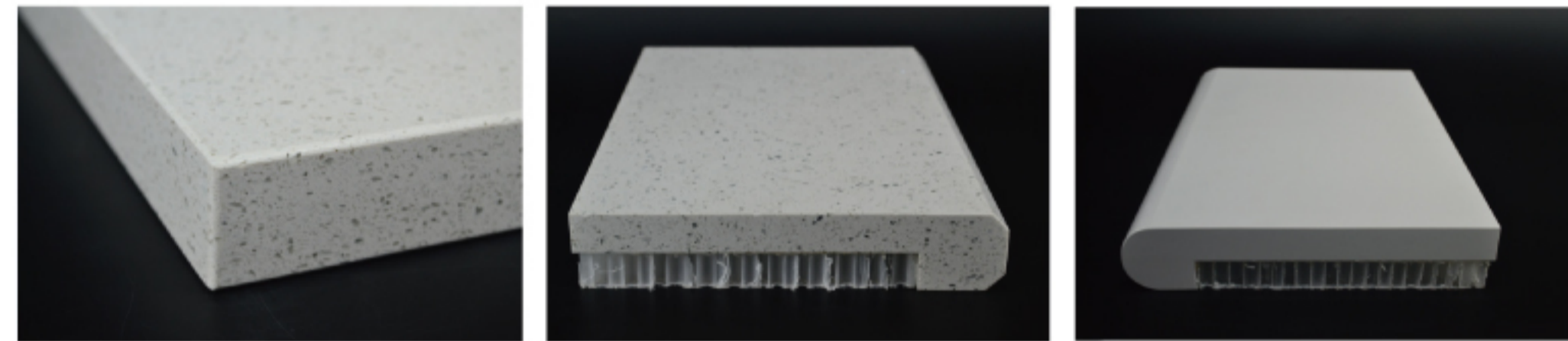
EDGE PROFILES



Waterfall

LTBR

LKN



LEP

LBV

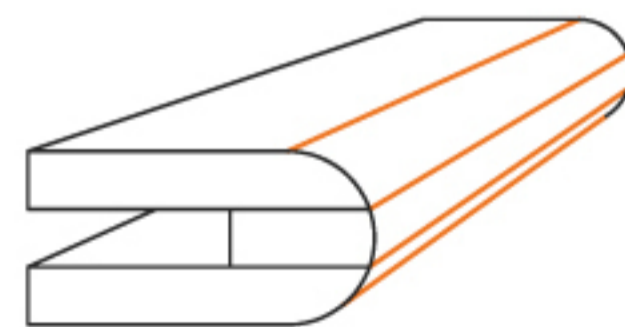
LBN



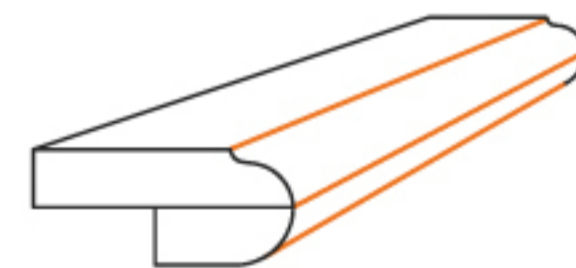
HBN

FBN

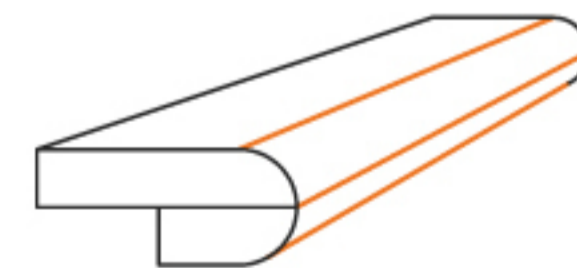
EP



Triple Laminated Bullnose



Ogee



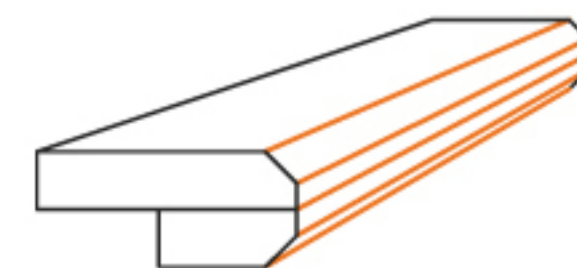
Laminated Bullnose



Full Bullnose



Eased



Double Bevel

TECHNICAL SPECIFICATIONS

No.	Test item(s)	Test method(s)	Test result(s)
1	Absorption by weight	Refer to ASTM C97/C97M-18	0.01 %
	Density		2463 kg/m ³
2	Abrasion resistance (polished)	Refer to ASTM C241/C241M-15 ^{E1}	37
3	Modulus of rupture	Refer to ASTM C99/C99M-18	Dry condition: 50.2 MPa Wet condition: 53.0 MPa
4	Flexural strength	Refer to ASTM C880/C880M-18	Dry condition: 48.5 MPa Wet condition: 52.6 MPa
5	Compressive strength	EN 14617-15:2005	256 MPa
6	Bond strength	Refer to ASTM C482-2002(2014)	3.46 MPa
7	Thermal shock resistance	Refer to ASTM C484-99(2009)	After 10 cycles, no visual defects
8	Mohs' hardness(honed)	Refer to EN 15771:2010	No Scratch: 6 Scratch: 7 Mohs' hardness: 6
9	Resistance to chemical substance	Refer to ASTM C650-04(2014)	Acetic acid, Ammonium chloride, Citric acid solution, Lactic acid, Phosphoric acid, Sulfamic acid, Sodium hypochlorite solution, Hydrochloric acid solution, Potassium hydroxide, not affected.
10	Sensitivity to accidental staining	Refer to EN 16301:2013	Red wine, cooking oil, instant coffee, ketchup, cola,citric acid,artificial urine, lime concentrate, blueberry soup, 15 min, effect of the test after cleaning, unchanged

Composition Info Ingredients

Description:

Mixture of the substances listed below with nonhazardous additions.

Composition:

CAS: 12141-46-7 EINECS: 235-253-8	<i>Aluminium silicate</i>	52-71%
CAS: 113669-95-7	<i>Fatty acids, castor-oil, caustic-oxidized, distn. residues, esters with 1,3-butanediol</i>	7-12.5%
CAS: 10101-39-0 EINECS: 233-250-6	<i>Calcium silicate</i>	4-6%
CAS: 1343-88-0 EINECS: 215-681-1	<i>Silicic acid, magnesium salt</i>	3-5%
CAS: 2530-85-0 EINECS: 219-785-8	<i>3-trimethoxysilylpropyl methacrylate</i>	0-5%
CAS: 1317-80-2 EINECS: 215-282-2	<i>Rutile (TiO₂)</i>	0.1-0.5%

Remark:

Aluminium silicate (CAS: 12141-46-7)
Note: Porcelain Powder

Fatty acids, castor-oil, caustic-oxidized, disn. residues, esters with 1.3-butanediol (CAS: 113669-95-7)
Note: Polyester Resin

Calcium silicate (CAS: 10101-39-0)
Note: Porcelain Glass

Silicic acid, magnesium salt (CAS: 1343-88-0)
Note: Porcelain Glass

3-trimethoxysilylpropyl methacrylate (CAS: 2530-85-0)
Note: Additives

Rutile (TiO₂) (CAS: 1317-80-2)
Note: Pigment White

SLAB DIMENSIONS

Standard Size

126"(320cm)x 63"(160cm)

Jumbo Slab Size

137 3/4"(350cm)x78 3/4"(200cm)

Standard Size Weight

2cm* 540-564 lbs (245-256kg)

3cm* 811-846 lbs (368-384kg)

Jumbo Slab Weight

2cm* 741-772 lbs (336-350kg)

3cm* 1111-1157 lbs (504-525kg)

FABRICATION & INSTALLATION

Ultracera slabs can be fabricated and installed similarly to natural stone. Polishing, cutting and any other finishes can be done by the same tools of machineries as to the natural stone.





M1171 Salt Lake

Delicacy Series



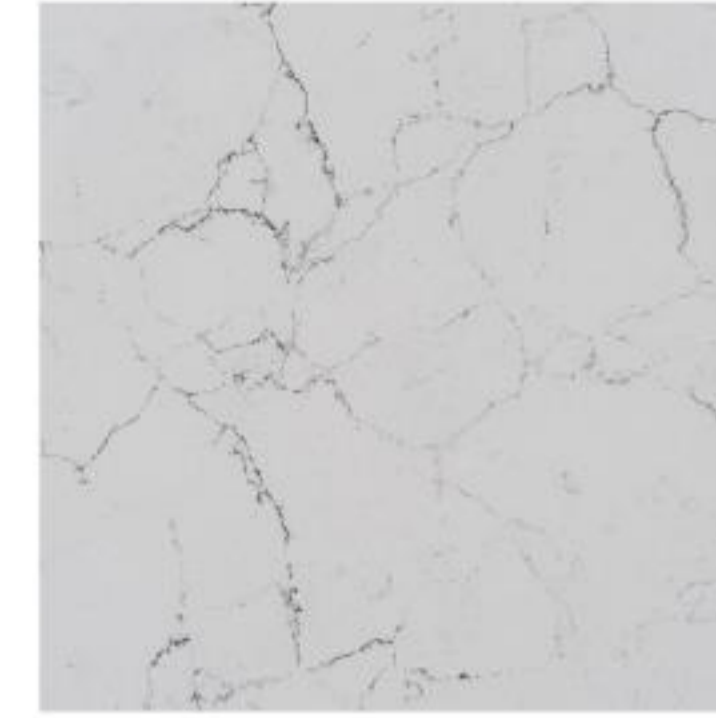
Slab View

Color Description

Salt Lake presents a predominantly white base that mimics the crystalline expanse of a salt flat. It is characterized by a subtle palette where soft, feather-like granules and light to medium grey clusters are sprinkled across the surface. The interplay of white and grey hues gives the slab a clean, fresh appearance, evocative of the purity and open space one might associate with a vast, serene salt lake. The patterns are understated yet intricate, providing a sense of depth and texture to the slab's surface.

Color Description

Ice Breaker is a mesmerizing surface composed of a bright white background, adorned with dense fractured swatches of medium-scale dark grey and black lines that elegantly flow through the slab. Adding a touch of intrigue, soft and short veins of brown-grey occasionally emerge in the open areas, enhancing the visual depth. Inspired by the breathtaking moment of ice breaking on a river, Ice Breaker captures the essence of this awe-inspiring phenomenon. Immerse yourself in the captivating beauty of Ice Breaker, where nature's wonder meets artistic expression.



Slab View

M1016 +
Ice Breaker
Plus

Fancy Series



Slab View

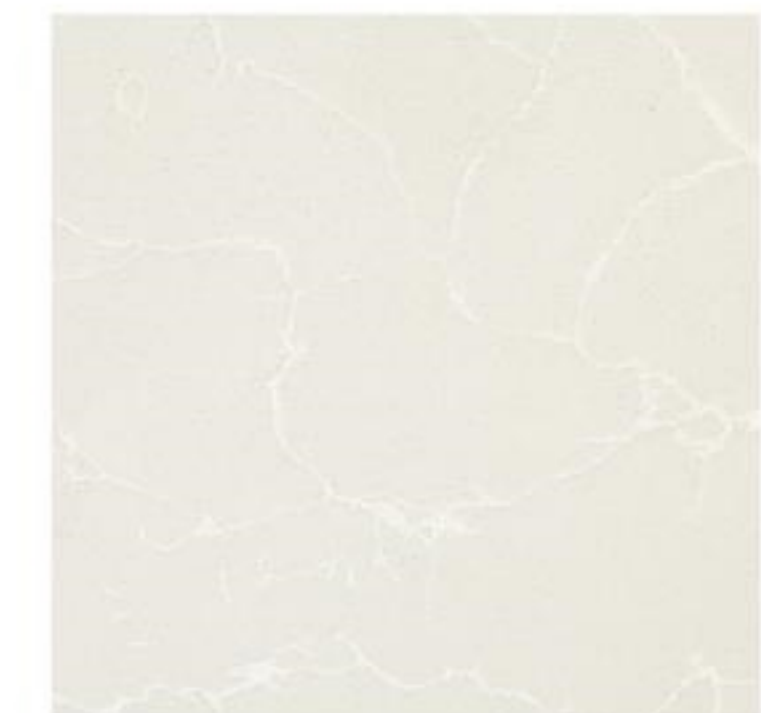


Color Description

Polished Beige exudes an aura of understated elegance with its warm, creamy beige base. A whisper of a lighter, almost ivory shade weaves through the stone in a delicate, serpentine pattern, adding a faint hint of movement and depth to the otherwise serene surface. This slab radiates a homely charm, its polished finish giving it a smooth touch and a gentle sheen that catches the light, highlighting the stone's innate, subtle features.

M2123
Polished Beige

Delicacy Series





Slab View



Color Description

Calacatta Bento is a symphony of nature's artistry, displaying a pristine alabaster backdrop traversed by a labyrinth of striking graphite-hued veins. The contrast is striking, yet harmonious, resembling an aerial view of a river delta or the delicate tracery of frost on a windowpane. Each vein is like a brushstroke, bold and assertive, set against the tranquil purity of the white base, making the slab a statement piece capable of anchoring any design scheme.

M1008

Calacatta Bento

Fancy Series



Color Description

Viscon White showcases an intricate, dynamic pattern of lighter and darker greys, creating a visually appealing, organic, engaging texture. The lighter areas bloom like delicate lichen spreading over a rock, while the darker grey swirls interlace, suggesting the natural veining in geological formations. This intricate design carries a certain fluidity, reminiscent of marble or granite, with a tactile depth that gives the surface a luxurious and sophisticated character. This pattern could add a touch of natural complexity and elegance to any space.



V5024 Viscon White

Fancy Series



Slab View





C3002 Summer Sky

Unique Series



Slab View

Color Description

Summer Sky captures the serene essence of a smoky light green background, evoking the tranquility of a summer sky. Delicate and swirling white veins dance across the surface, intertwining with wispy jade green veins. The combination of these graceful patterns creates a captivating visual display reminiscent of wispy clouds and gentle breezes. Immerse yourself in the peaceful ambiance of Summer Sky, where the beauty of nature and the calmness of a summer sky come together in perfect harmony.

P5057 Earth Grey

Vintage Series

Color Description

Earth grey has a subtle, grainy pattern with specks of darker and lighter greys that imitate the natural distribution of minerals in stone. This colour symbolizes steadiness and flexibility, making it suitable for different design spaces while exuding natural elegance. It can easily complement a variety of colour schemes, providing a sense of grounding due to its connection to the earth's elemental tones.



Color Description

Waves Sand embodies the majestic view of rolling waves and foamy beaches with its captivating design. The goose-grey background sets the stage for a mesmerizing display of tone-on-tone white bubbles varying in size and shape. These bubbles create a sense of movement and depth, resembling the frothy waves. Occasionally, gold and brown accents add warmth and elegance, bordering the waves and enhancing the overall grandeur. Experience the allure of Waves Sand as it brings the beauty of ocean waves and foamy shores to your space.



Slab View



V5043

Waves Sand

Premium Series



Slab View



V5044 + Alpine Grey Plus

Unique Series



Color Description

Alpine Grey showcases a tone-on-tone grey background design with subtle variations, creating a serene and wintry ambiance. The intriguing white-haze patinas gracefully blend with the nuanced grey tones, evoking the picturesque view of a pine forest in the Alpine mountain. The design captures the essence of a frosty winter landscape, where tranquility and natural beauty converge. Experience the allure of Alpine Grey as it brings the serene charm of the Alpine mountain into your space.



V5553 Lake Grey

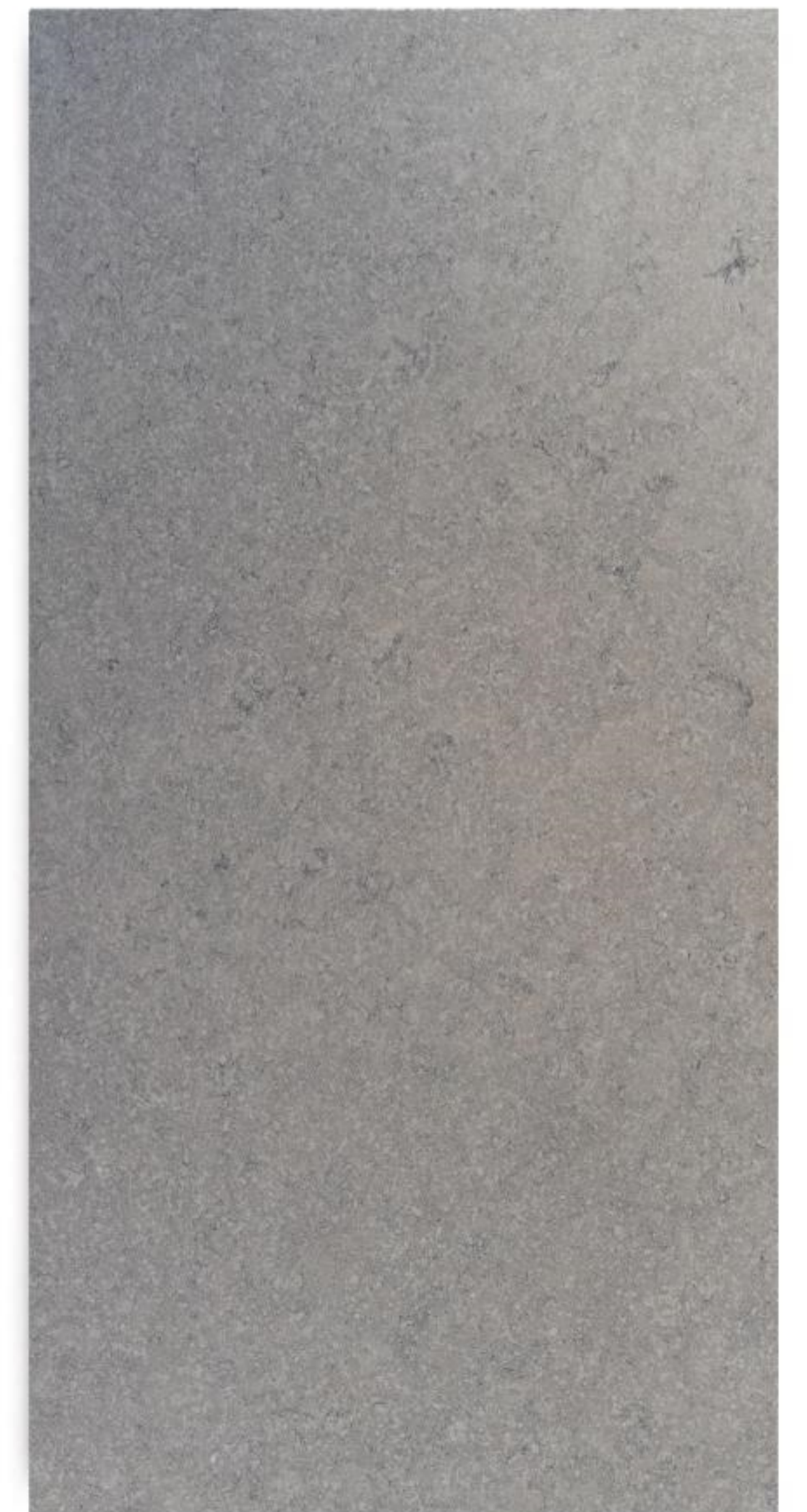
Fancy Series

Color Description

Lake Grey Boasts a muted palette of dove grey, evocative of a still and foggy lakeside morning. The marbling is soft and sophisticated, with wisps of lighter grey that swirl across the slab like the morning mist rising off the water. These delicate veins are sparse, giving the slab a clean and contemporary feel, while the polished surface creates a subtle sheen, suggesting the quiet reflection of light on a calm lake.



Slab View





C6046 Planet Autumn

Unique Series



Color Description

Planet Autumn presents a fresh grey background design adorned with two-toned maple red and dark red veining in a large-scale pattern. The gradient hues of maple red seamlessly blend with the dark red veining, creating a complex and captivating canvas. Punctuated ridges further enhance the visual intrigue, evoking the enchanting scenery of a maple forest during the autumn season. Immerse yourself in the captivating beauty of Planet Autumn, where fresh grey tones and rich maple red veining converge to create a truly mesmerizing surface.



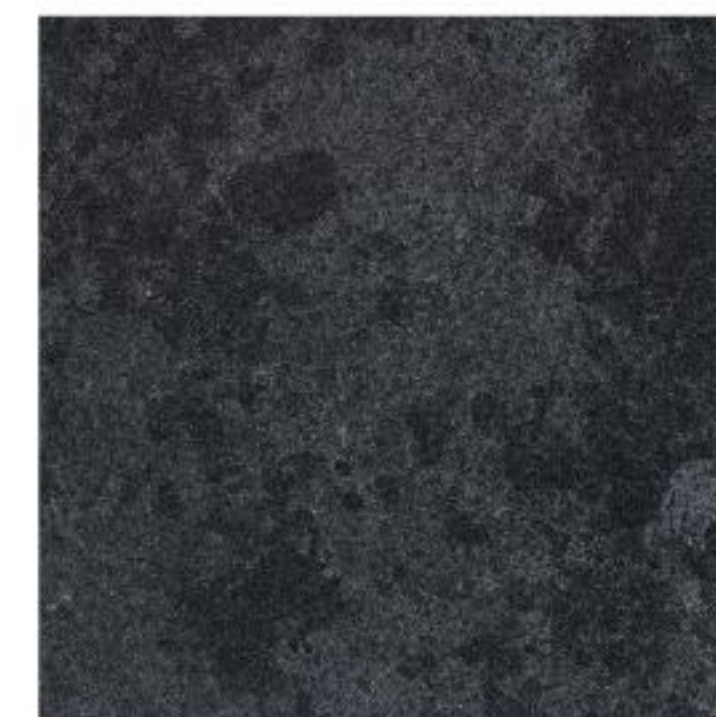
Slab View



Slab View

Color Description

Placer black showcases a deep, slate-grey canvas with an intricate dance of lighter and darker shades that create a captivating visual depth. The nuances in tone resemble the natural layering of sedimentary rock or the charcoal smudges of a well-used artist's easel. This complex interplay of shadows provides a rich, tactile sensation, giving the impression of an organic and sophisticated surface. It's perfect for creating a statement in any space that calls for dramatic flair and timeless elegance.



C9810
Placer Black

Unique Series

VINTAGE SERIES



Pure White
P1001



Pole White
P1050



Frost White
P1101



Crystal White
P1202



Twink White
P1230



Salt White
P1301



Spark White
P1401



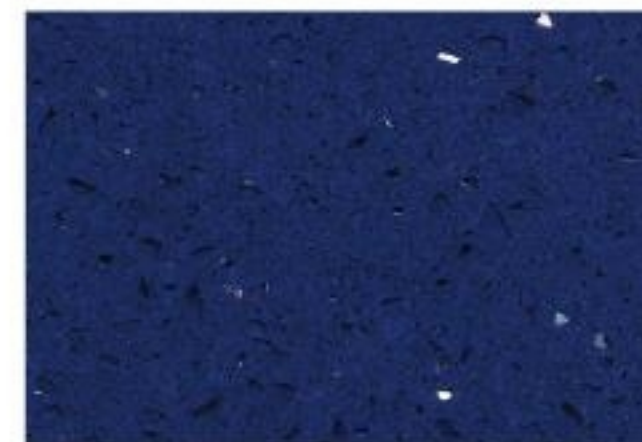
Silverite
P5003



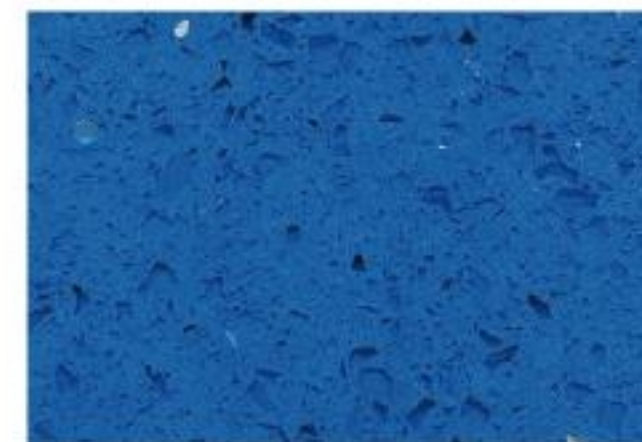
Alabaster
P5004



Earth Grey
P5057



Marine Blue
P8201



Atlantis
P8213



Concrete Black
P9301



Astro Black
P9001

DELICACY SERIES



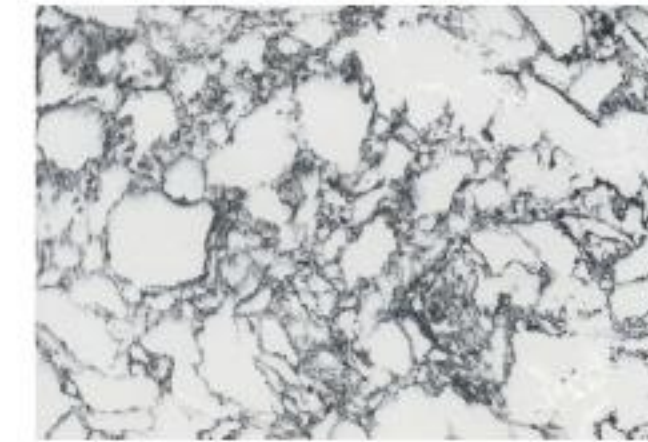
Morning Mist
M1043



White Clara
M1071



Carrara Naxos
M1075



Arabescatto
M1076



Seide
M1009



Delic Clara
V1151



Wiscon Pearl
M2101



Spring Grey
M1134



Salt Lake
M1171



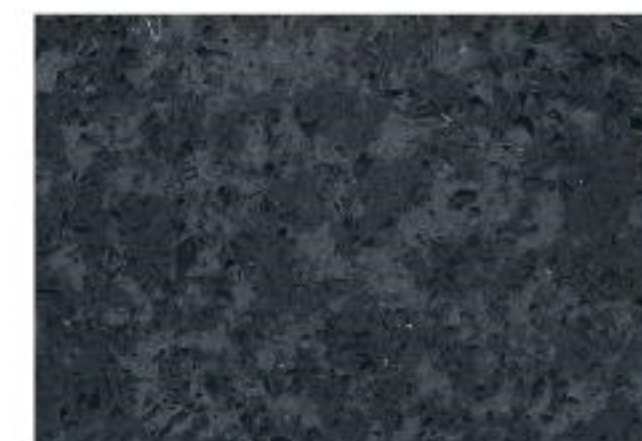
Misty Harvey
V1146



Polished Beige
M2123



Columbia Beige
V2105



Crystal Black
P5007



Alaska Black
M9015

FANCY SERIES



Calacatta Casual
M1005



Calacatta Vintage
M1090



City Arc
M1070



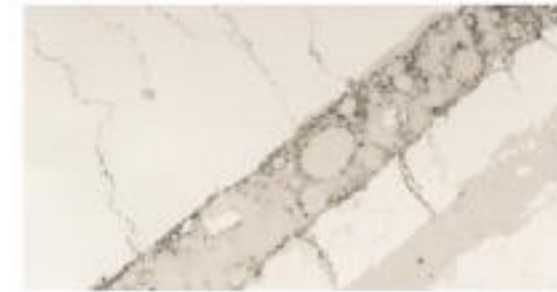
Ice Breaker
M1016



Calacatta Era
M1031



Botti Beige
M1021



Calacatta Brook
M1072



Calacatta Rivers
M1092



Calacatta Dunes
M1096



Carrara Silk
M1051



Pearl Grey
V5030



Everest Extra
V5211



Viscon White
V5024



Jungle Grey
V5313



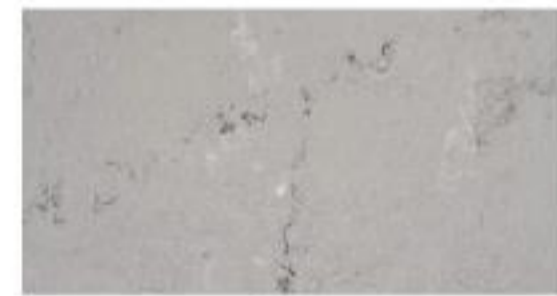
Oyster Grey
V5231



Rock Grey
V5353



Lake Grey
V5553



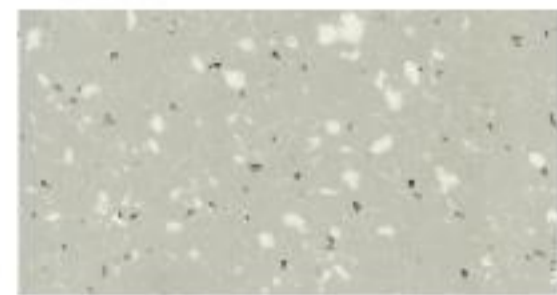
Mountain Grey
V5034



Florence
V6801



Breeze
V5143



Fresh Grey
G5085



Claro Grey
M9050



Flow Noir
M9051



Nunaat Black
V9020



Polar Black
M9021

PREMIUM SERIES



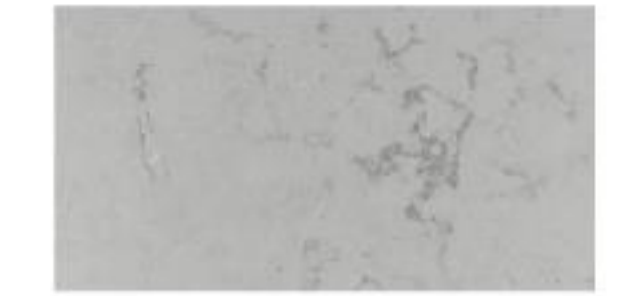
Calacatta Bento
M1008



Arabescatto Ultra
M1188



Calacatta
M1199



Roseland
M1060



Matinal Grey
V1111



Clouds Haze
V1110



Waves Sand
V5043



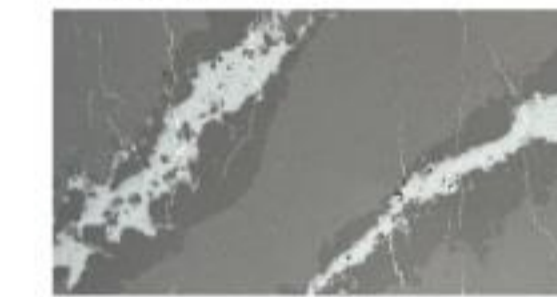
Gainsboro
V5046



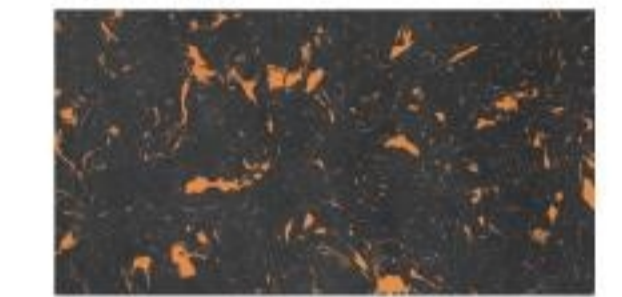
Beach Sands
V6031



Lagoo
V5858



Denali
M5013



Black Flower
M9111

UNIQUE SERIES



Calacatta Dorato
M1299



Calacatta Gold
M1099



Tiger Skin
V5861



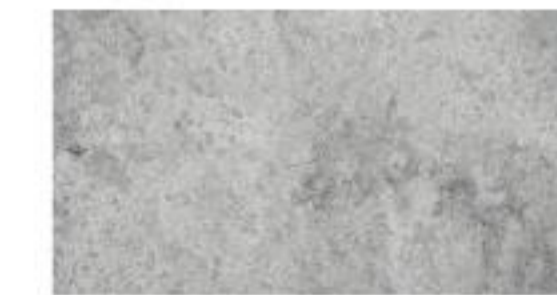
Foreshore
V6023



Summer Sky
C3002



Placer Black
C9810



Alpine Grey
V5044



Planet Autumn
C6046



Platinum Black
P5008